

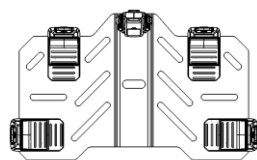
ARCANE WARRIOR®

Rugged Cargo Case
Mount Z01/Z02 Pro

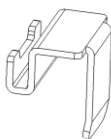
Estimated Time: Approximately 10 minutes

Thank you for choosing the ARCANER WARRIOR Rugged Cargo Case Mount Z01/Z02 Pro. To ensure safe and reliable installation, please read this manual carefully and follow all steps precisely (using the 52L rugged cargo case as an example).

Parts List



Rugged Cargo
Case Mount*2



Quick-release
base hooks*2



Spring nuts*8



M10x25 hex
socket screws*8



M10 flat
washers*8

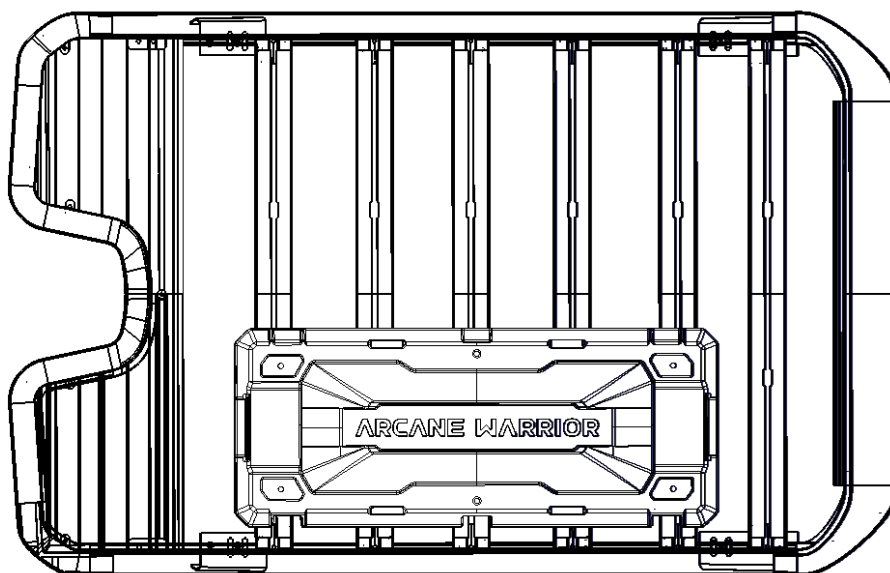


6mm
wrench*1

14mm open-
end wrench*1

Installation Steps

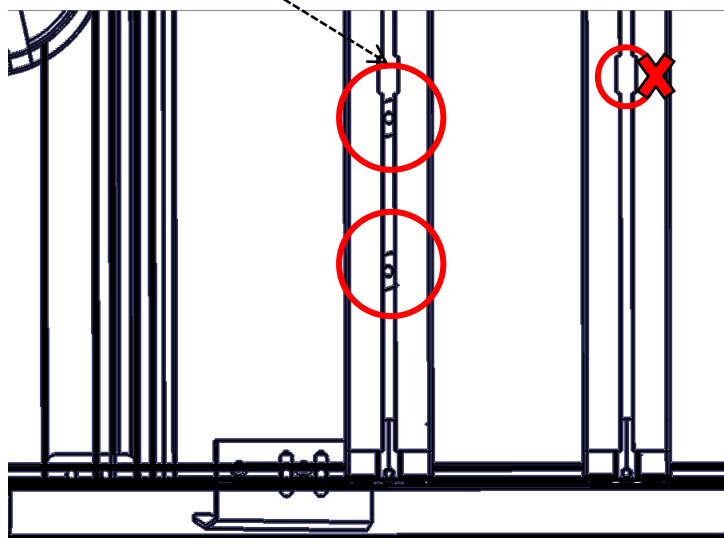
1



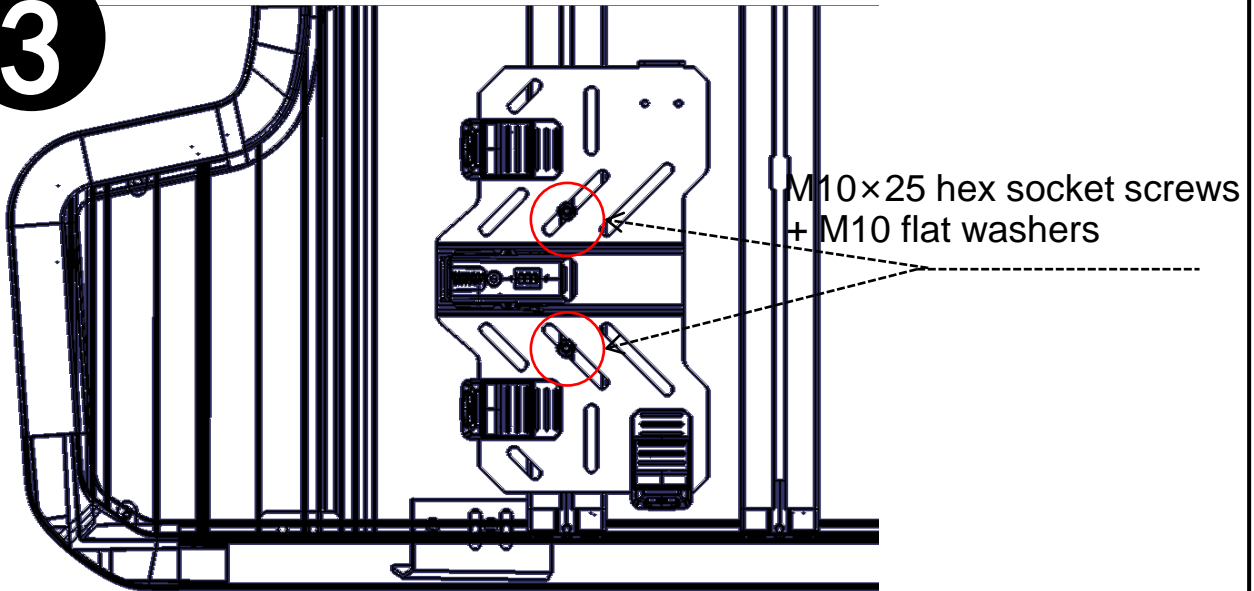
Carry the rugged cargo case to the roof rack to confirm the mounting position

2

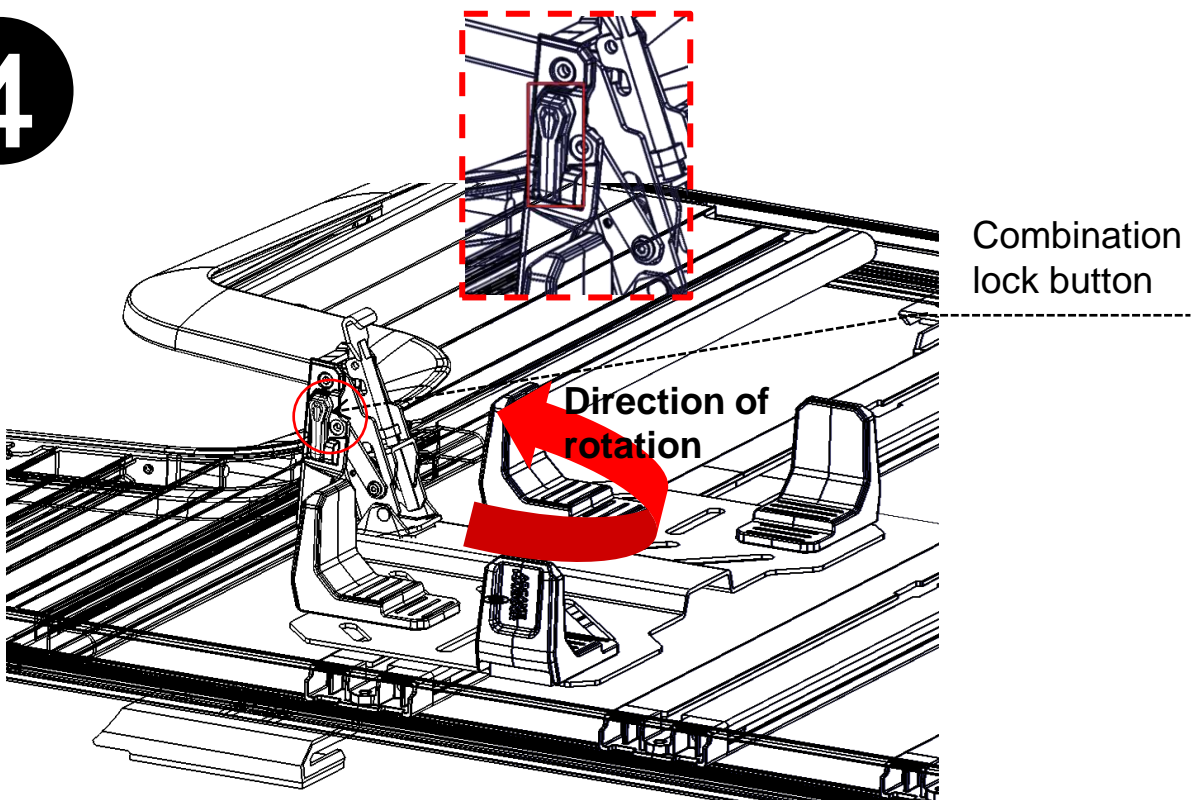
M10×25 hex socket screws



Identify the rear mounting position on the crossbar of your vehicle's roof rack. Pre-install spring nuts onto the crossbar, ensuring they align with the designated slots. (Be careful to avoid the location of slots)

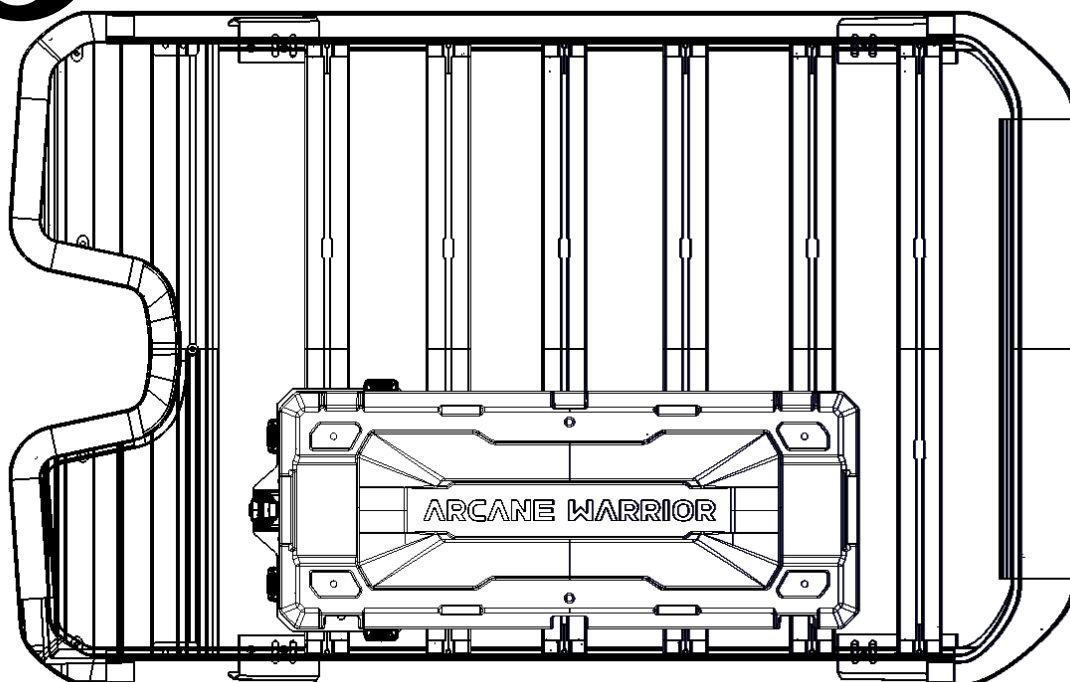
3

Position the rugged cargo case mount on the crossbar. Insert the M10×25 hex socket screws through the M10 flat washers and into the spring nuts. Tighten lightly—do not fully secure at this stage.

4

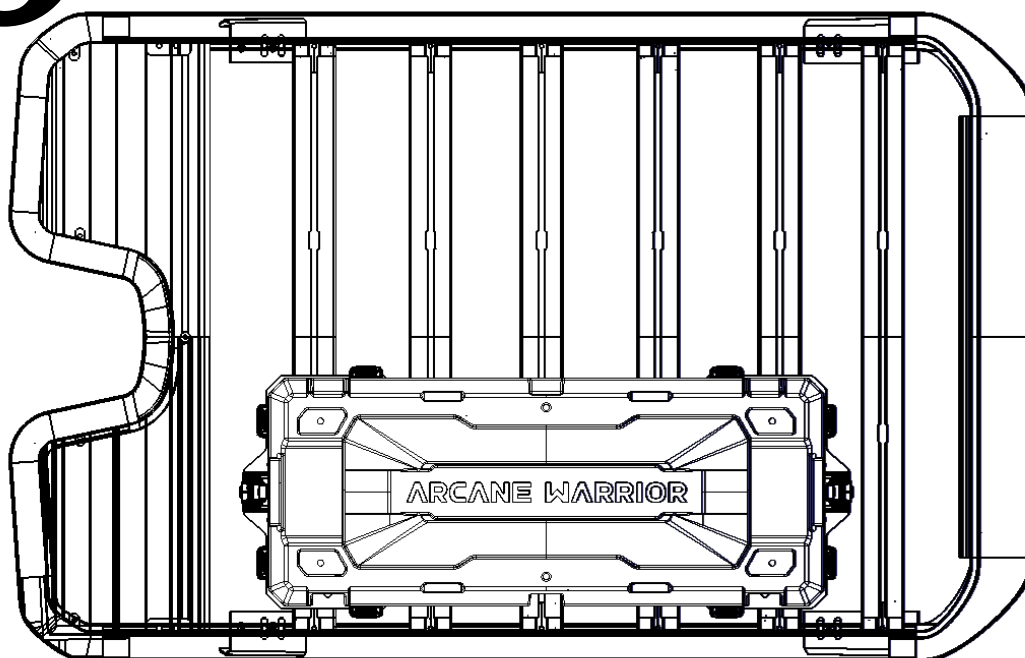
Press the buttons on both sides of the combination lock to release the quick-release mount clamps. Rotate the lock in the indicated direction to fully open the clamps.

5



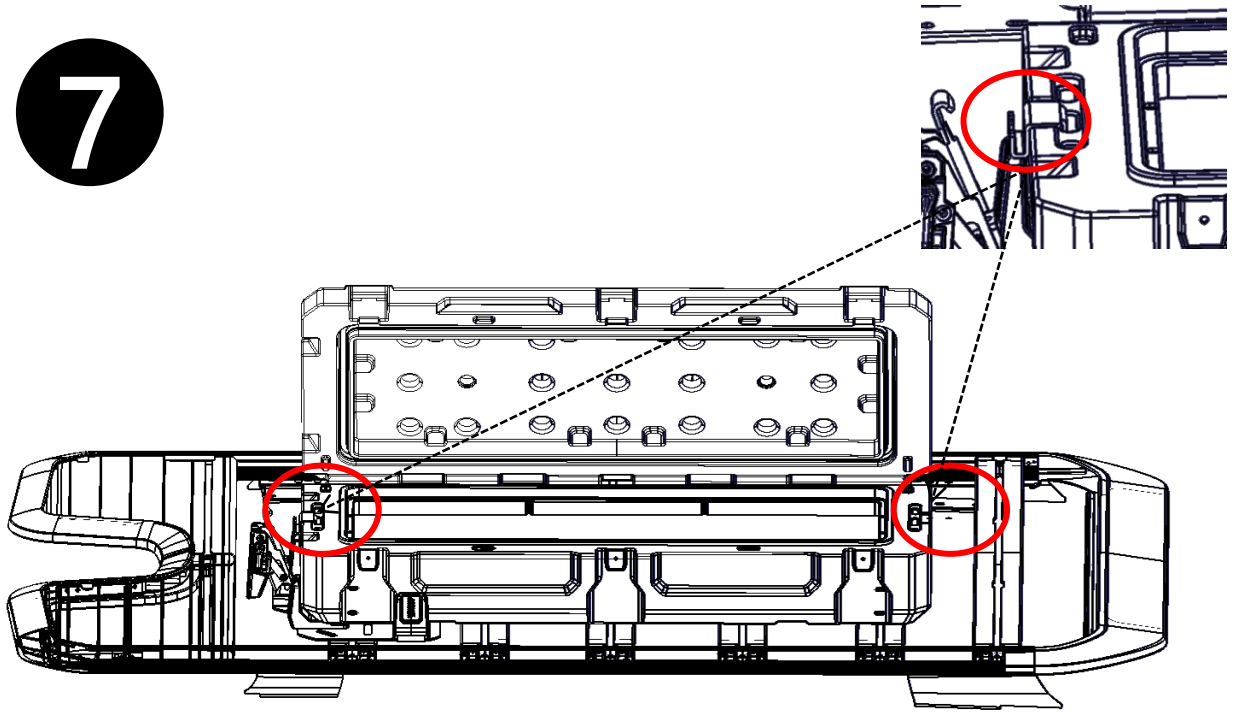
Place the case onto the rugged cargo case mount.

6



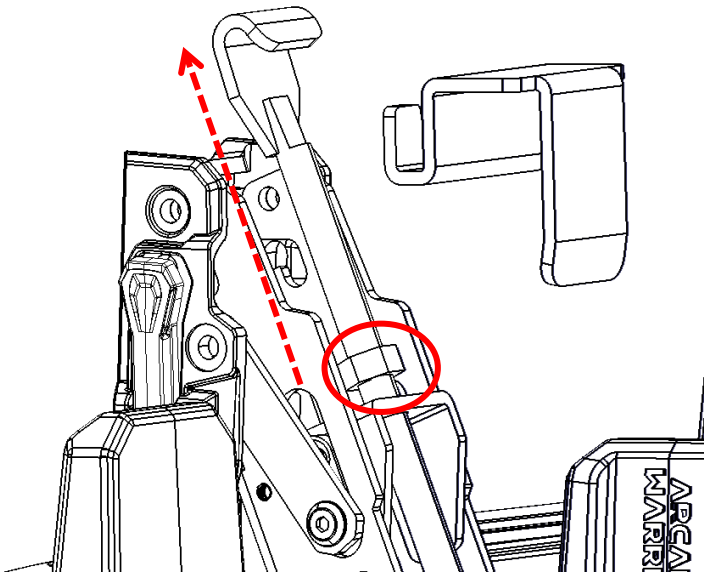
Secure the opposite side. Repeat Steps 2–4 for the opposite crossbar. Ensure the cargo case sits securely on both mounts before fully tightening all M10 screws at the mount brackets.

7



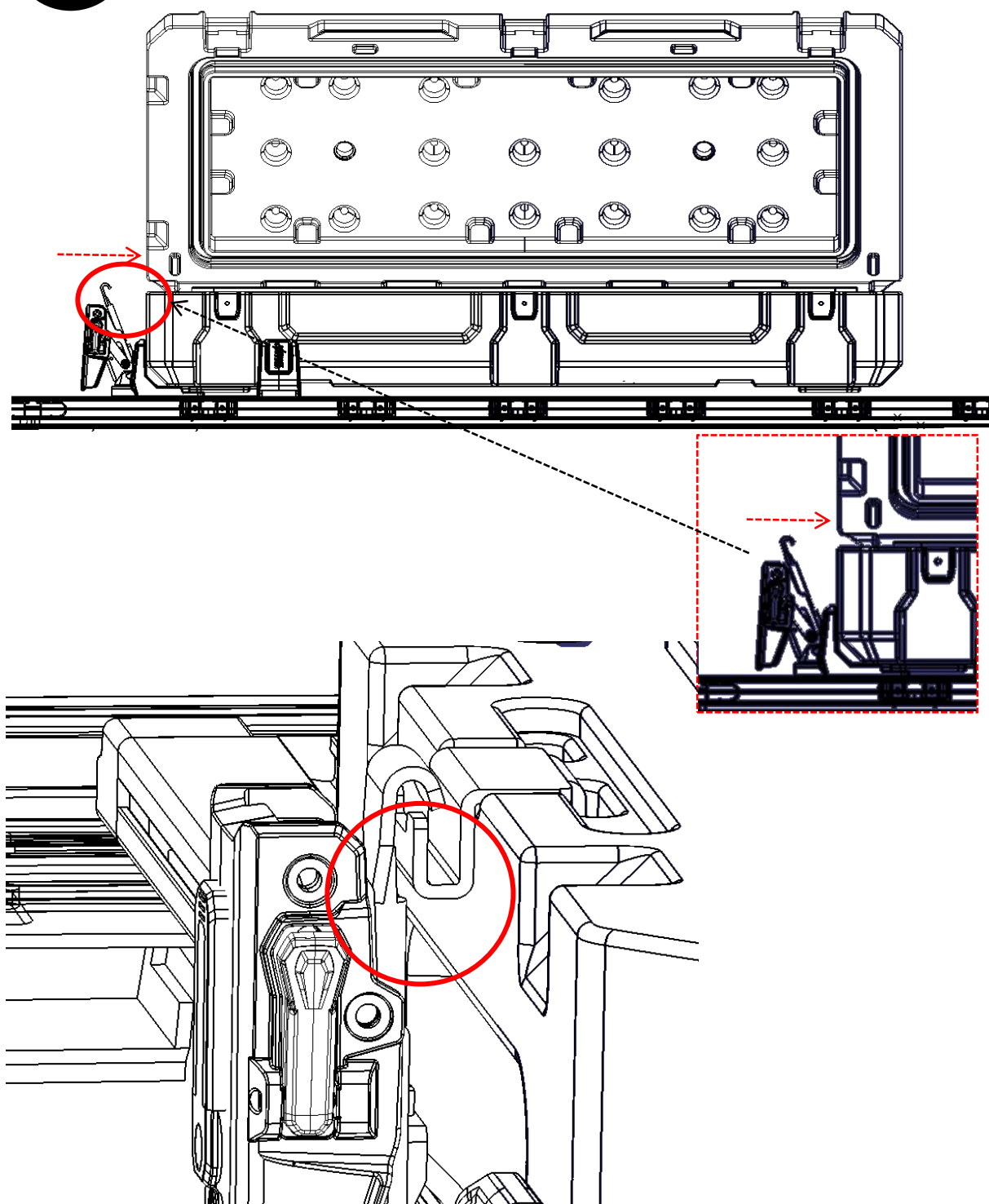
Open the cargo case and fix the quick-release base hooks to both interior sides.

8



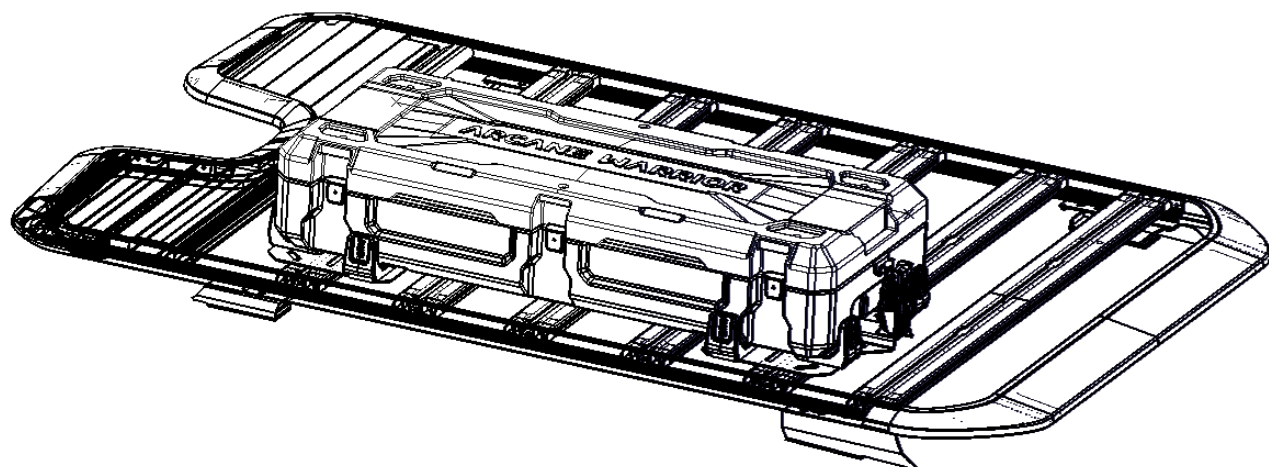
Adjust the lock clamps. Use the 14mm open-end wrench to loosen the nuts on the lock clamps. Raise the clamps to create sufficient clearance, then adjust their length.

8



Align the clamps with the base hooks to ensure a snug fit. Tighten the nuts securely. Verify that the combination lock is properly closed and the cargo case is firmly locked onto the mounts.

9



Close the cargo case and confirm the installation is complete.